

**IMMERGAS**

***Technical Data***



# Technical data – electrical section

<b>Mono-phase range</b>	<b>u.m.</b>	<b>4</b>	<b>6</b>	<b>8</b>	<b>12</b>	<b>14</b>	<b>16</b>
Power supply range (min-max) 50Hz	V	198 – 264					
Nominal power	kW	2,3	2,7	3,4	5,5	5,8	6,2
Nominal absorption	A	12	14	16	25	26	27
Power supply wires (section and number)	mmq	4x3			6x3		
Communications wires (section and number)	mmq	0,75x5 (shaded)					

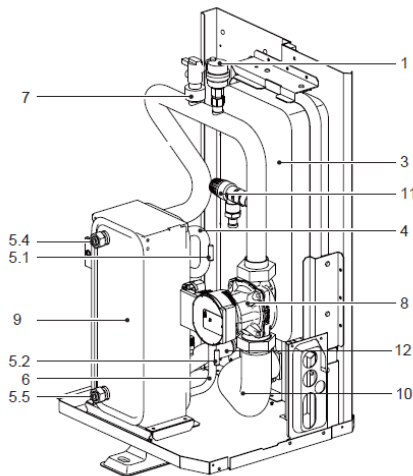
<b>Three-phase range</b>	<b>u.m.</b>	<b>12T</b>	<b>14T</b>	<b>16T</b>	<b>18T</b>	<b>22T</b>	<b>26T</b>	<b>30T</b>
Power supply range (min-max) 50Hz	V	342 – 456						
Nominal power	A	5,5	5,8	6,2	10,6	12,5	13,8	14,5
Nominal absorption	A	10	11	12	16,8	19,6	21,6	22,8
Power supply wires (section and number)	mmq	2,5x5			6x5			
Communications wires (section and number)	mmq	0,75x5 (shaded)						



# Technical data – hydraulics section

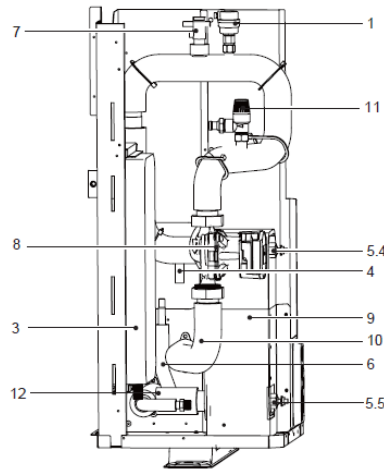
		4/6	8	12/14/16	12/14/16 T	18/22/26/30T
<b>1</b>	Air purge	Yes				
<b>2</b>	Flow meter ( min. flow rate)	6 l/min	6 l/min	10l/min		27 l/min
<b>3</b>	Safety valve	3 bar				
<b>4</b>	N°4 Probes	2 Gas side (NTC 10KΩ 25°C)/ 2 water side (NTC 50KΩ 25°C)				
<b>5</b>	Min pump flow rate (m3/h)	0,40	0,40	0,70		0,1
<b>6</b>	Max pump flow rate(m3/h)	(4)0,90/(6)1,25	1,65	(12)2,50/(14) 2,75/(16) 3,00		5,4
<b>7</b>	Expansion vessel	8 litres				
<b>8</b>	Drain water tap	NO				
<b>9</b>	«Y» filter	To install				
<b>10</b>	Min water contents	40 litres (HP excluded)				
<b>11</b>	Max water contents	230 litres ( with altitude ≤7 m no pressure adjustments required)				

## 4 ÷ 6



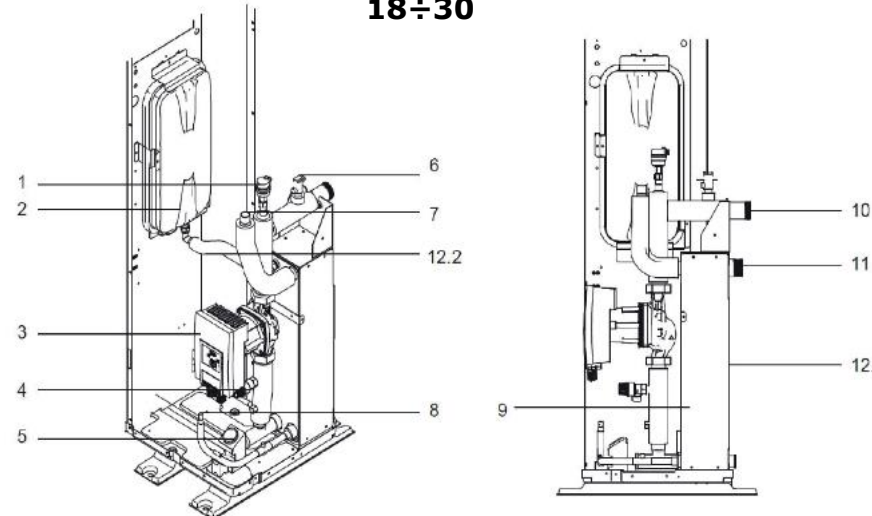
1. Automatic purge valve
3. Expansion vessel
4. Refrigerant gas pipe
5. Sensors
6. Refrigerant liquid pipe
7. Flow switch
8. Pump
9. Plate exchanger
10. Output water pipe
11. Safety valve
12. Inlet water pipe

## 8 ÷ 16



1. Automatic purge valve
3. Expansion vessel
4. Refrigerant gas pipe
5. Sensors
6. Refrigerant liquid pipe
7. Flow switch
8. Pump
9. Plate exchanger
10. Output water pipe
11. Safety valve
12. Inlet water pipe

## 18 ÷ 30



1. Automatic purge valve
2. Expansion vessel
3. Pump
4. Safety valve
5. Manometer
6. Flow switch
7. Gas pipe connection
8. Liquid pipe connection
9. Plate exchanger
10. Output water joint
11. Inlet water joint
- 12.1. heater
- 12.2. heater



# Technical data – frigorigen circuit section

Size	u.m	4	6	8	12 12T	14 14T	16 16T	18 18T	22T	26T	30T
Refrigerant charge (R32)	Kg	1,40			1,75			5,00			
Leak check requirement	(1)	NO									
<i>Is needed register the heat pump until 30gg at the telematic data bank ( according to the country law)</i>	(2)	YES									
<i>Installation resritiction observance</i>	(3)	NO						YES			

(1) All the heat pump are declaired “ermetic sealed” therefore not is needed to control the gas leakage when the refrigerant gas quantity (R32) is lower than 14,8 Kg, corrisponding to 10 ton of CO<sub>2</sub> equivalent.

(2) People and Company with F-GAS certification, by telematic way must be declares until 30 days, all the data concerning the installations data, maintenance and decommission of the systems that contains F-gas

(3) Concerning system preloaded with R32 > 1,84 kg is required to observe special rules (if the heat pump is installed in a closed area

